



# iRig<sup>®</sup> HD2

Guitar interface

USER MANUAL

## Table of Contents

|                                        |    |
|----------------------------------------|----|
| <b>Contents</b>                        | 2  |
| <b>English</b>                         | 3  |
| <b>iRig HD 2</b>                       | 3  |
| <b>Register your iRig HD 2</b>         | 3  |
| <b>Installation and setup</b>          | 4  |
| iOS devices                            | 4  |
| Mac                                    | 7  |
| <b>Setting input gain on iRig HD 2</b> | 8  |
| <b>Amplifier output jack</b>           | 8  |
| THRU-FX switch                         | 9  |
| <b>Headphone output jack</b>           | 9  |
| <b>Stand adapter</b>                   | 9  |
| <b>Troubleshooting</b>                 | 10 |
| <b>Specifications</b>                  | 10 |
| <b>Warranty</b>                        | 10 |
| <b>Support and more info</b>           | 10 |
| <b>Regulatory</b>                      | 11 |

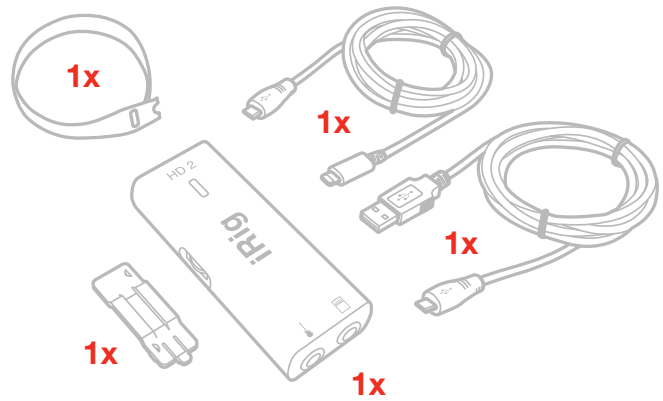
---

## iRig HD 2

Thank you for purchasing iRig HD 2.

Your package contains:

- iRig HD 2
- USB cable
- Lightning cable
- Velcro clip
- Velcro strip
- Quick Start Guide
- Registration Card



iRig HD 2 is the successor of the wildly popular iRig HD digital guitar interface for iPhone, iPad, Mac & PC. This new version of the iRig HD 2 is packed full of player-centric features in an all new enclosure. A new micro-USB port replaces the mini-DIN connector, and lightning and USB cables are included. iRig HD 2 includes a new 1/8" headphone output with preamp and level control, perfect for newer devices without dedicated headphone output jacks. There's also a new 1/4" unbalanced T/S (Tip/Sleeve) "Amp Out" jack that works in two modes thanks to the amp out switch: THRU and FX. The THRU setting sends the dry, unprocessed guitar signal to the Amp Out jack, the FX setting sends the processed signal coming from your device or computer to the Amp Out jack. These settings are designed to allow you to use your device in live playing and recording situations. Also you can optimize the input level of your instrument with the input gain control thumbwheel.

## Register your iRig HD 2

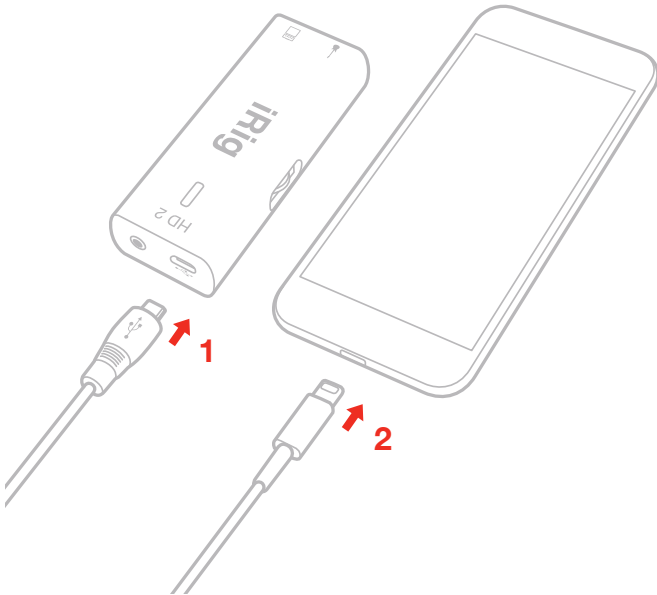
By registering, you can access technical support, activate your warranty and receive free JamPoints™ which will be added to your account. JamPoints™ allow you to obtain discounts on future IK purchases! Registering also keeps you informed of all the latest software updates and IK products.

Register at: [www.ikmultimedia.com/registration](http://www.ikmultimedia.com/registration)

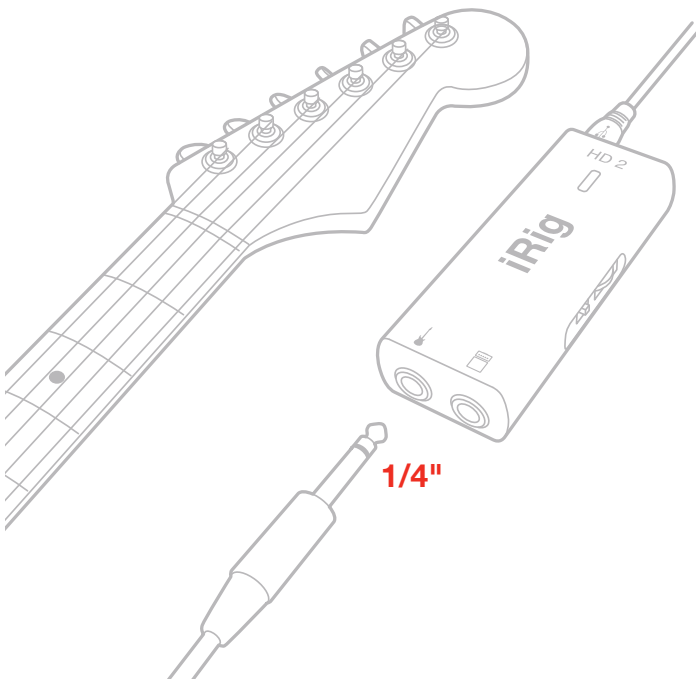
## Installation and setup

### iOS devices

1. Connect the included micro-USB cable to the iRig HD 2.
2. Connect the cable to the Lightning port on your device.



3. Connect your guitar, bass or other mono instrument to the 1/4" input jack on iRig HD 2.



- Download your preferred app from your device's app store.

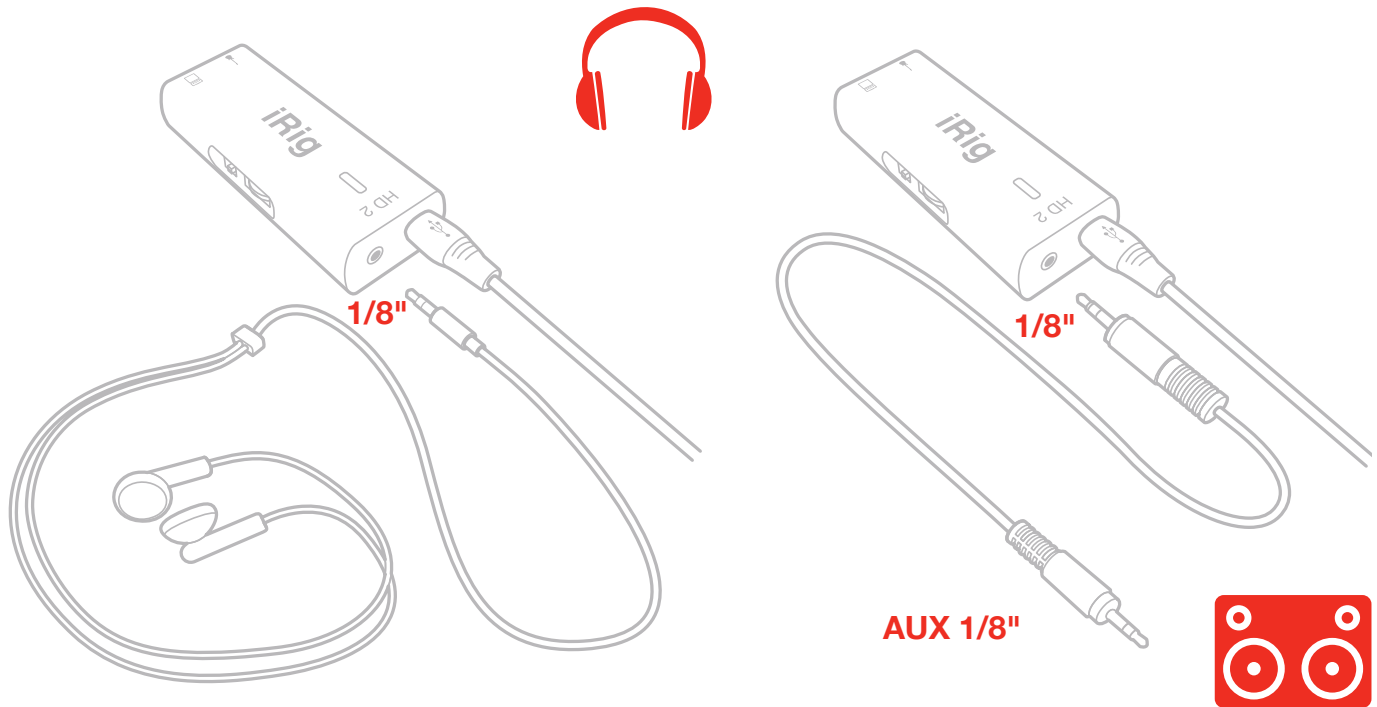
**AmpliTube 4 iOS/Mac/PC  
FREE DOWNLOAD**



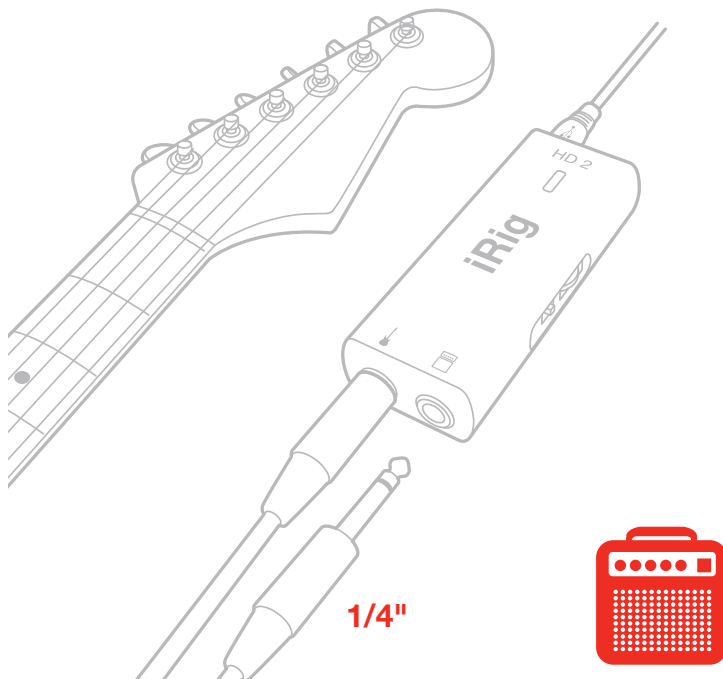
[ikdownloads.com/irighd2](http://ikdownloads.com/irighd2)



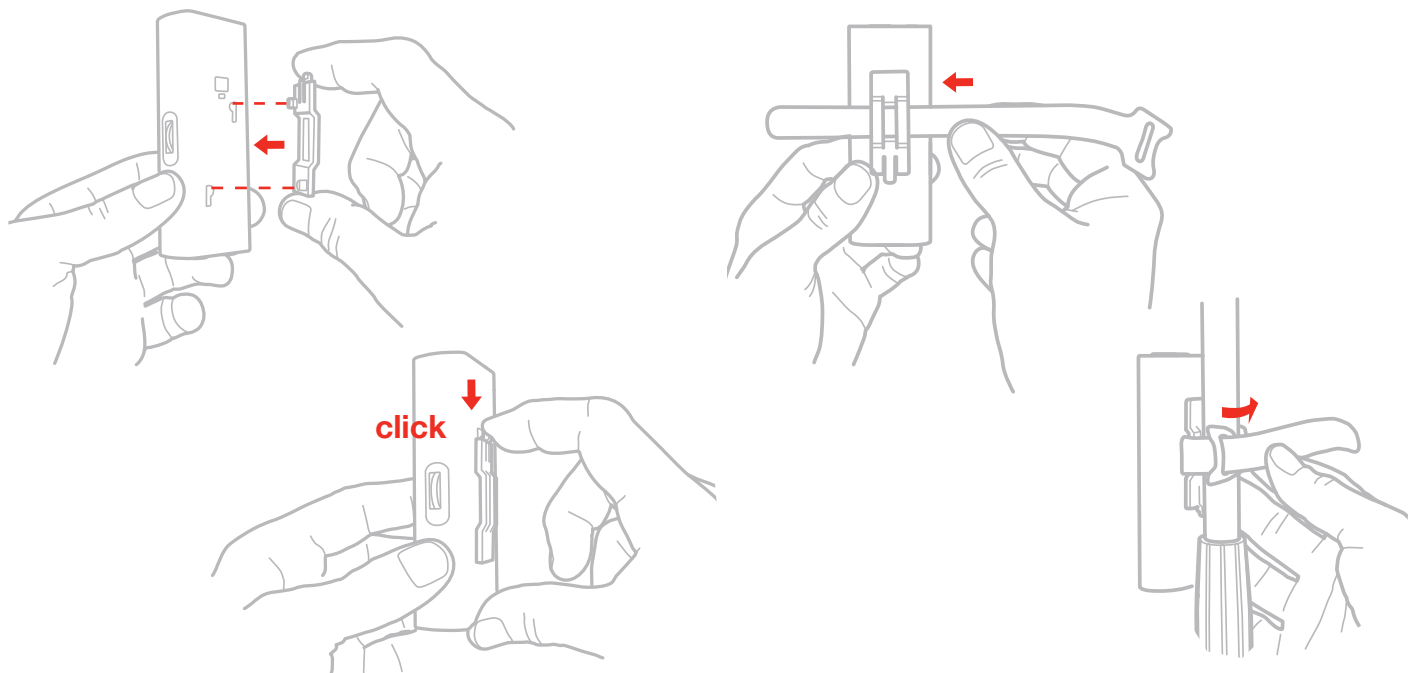
- Connect your headphones, mixer or powered speakers to the iRig HD 2 headphone jack.



6. Connect an external amplifier to the 1/4" TS Amplifier output jack on iRig HD 2 and select the type of signal sent to the output with the THRU-FX switch.

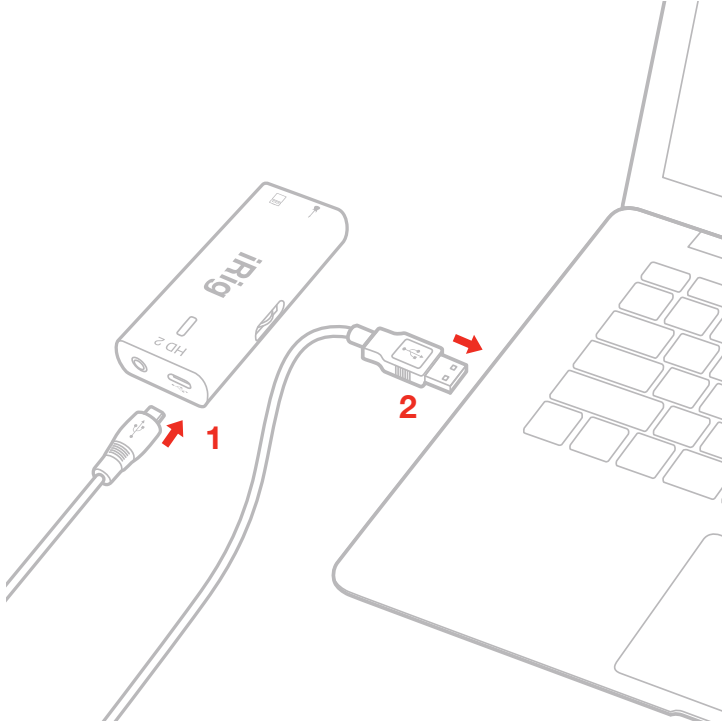


7. If needed, connect the detachable velcro-slot to the back of iRig HD 2 and attach it to any stand or pole with the velcro strap.



## Mac

1. Connect the included micro-USB cable to the iRig HD 2.
2. Connect the cable to an available USB port on your Mac. The status LED on iRig HD 2 will turn dark blue.



3. Connect your guitar, bass or other mono instrument to the 1/4" input jack on iRig HD 2.
4. Launch AmpliTube or any other Core-Audio compatible application and select iRig HD 2 as the input device from the audio preference.
5. Connect your headphones, mixer or powered speakers to your Mac headphone jack.
6. You can connect your headphones, mixer or powered speakers to the headphone jack on the iRig HD 2. You'll need to select iRig HD 2 as the output device from the audio preferences.

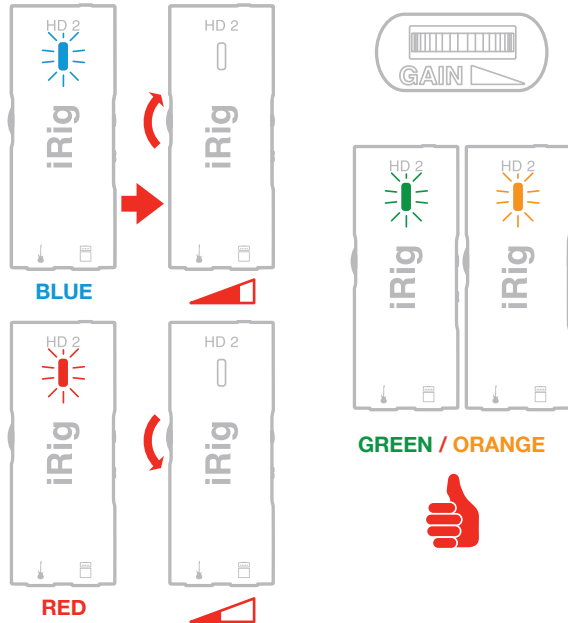
## iRig HD 2 status LED

The LED on iRig HD 2 gives you important information about the iRig HD 2's operative status. Each status is indicated by a different color:

- LED is **off**: iRig HD 2 is not connected to any power source.
- LED is **dark blue**: iRig HD 2 is connected and in standby mode.
- LED is **bright blue**: iRig HD 2 is connected and active.
- LED is **green**: iRig HD 2 is active and the input signal is low.
- LED is **orange**: iRig HD 2 is active and the input signal is OK.
- LED is **red**: iRig HD 2 is active and the input signal is too high.

## Setting input gain on iRig HD 2

When playing your instrument check the iRig HD 2 status LED.



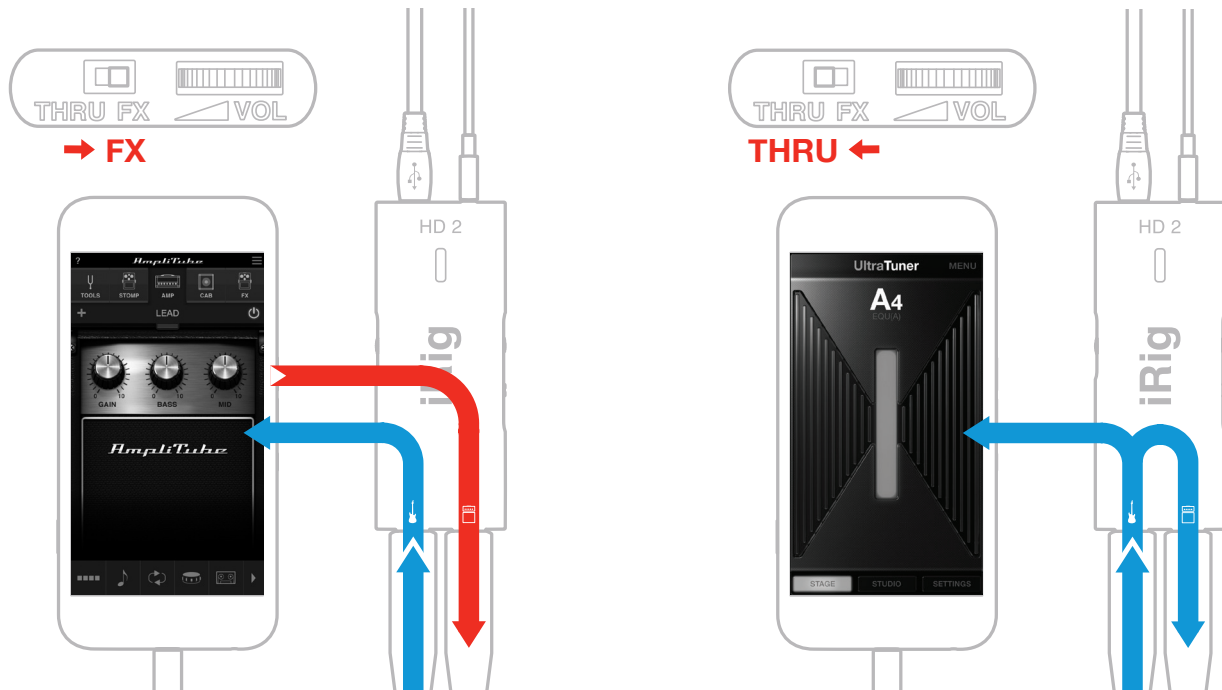
- If the LED is alternating between BLUE and GREEN or is always GREEN, you should **increase** the iRig HD 2 input gain by rotating the GAIN control toward the output connector.
- If the LED is sometimes flashing RED you should **decrease** the iRig HD 2 input gain by rotating the GAIN control toward the input connector.
- **When your gain setting is optimal, the LED should alternate between GREEN and ORANGE while you play.**

## Amplifier output jack

You can also connect an external amplifier to iRig HD 2 thanks to the “Amplifier output jack”. This allows you to send the processed signal (i.e. from a rig inside your mobile device) or a direct unprocessed signal, out to your amplifier or other unbalanced input.



## THRU-FX switch



The Thru-Fx switch allows you to select the type of output that is sent thru the “Amplifier output jack.”

When this switch is set to THRU, the “Amplifier output jack” carries the same signal that is sent to the instrument input. This mode is typically used to send the dry instrument signal back out to an instrument amplifier or other unbalanced input. This lets you plug your favorite amplifier into the “Amplifier output jack” and, at the same time, connect iRig HD 2 to your mobile device that runs. For example, a tuner app or your favorite recording app. The headphone out lets you listen to the processed output of your device.

When this switch is set to FX, the “Amplifier output jack” carries the processed signal from your mobile device to an instrument amplifier. This lets you process your instrument inside your favorite app and then send it to, for example, an amplifier’s clean channel.

## Headphone output jack

The 1/8” headphone output lets you conveniently monitor the signal coming from your device. This output works seamlessly in both switch positions (Thru-Fx). It is also possible to adjust its volume thanks to the dedicated thumwheel.

## Stand adapter

You can attach iRig HD 2 to any microphone stand or pole via the included clip and velcro strip.

## Troubleshooting

### Sound is distorted.

Check that the input gain on iRig HD 2 has been set properly. If the LED is red when you play your instrument, decrease the input gain as described in this guide.

### I don't get any sound.

In order for iRig HD 2 to turn on, a Core Audio-compatible audio app must first be launched on your iOS device or Mac.

- iOS: be sure you are using an app that works with audio input from the Lightning dock connector.
- Mac: be sure you have set "iRig HD 2" as the audio input device on the audio app you are using.

## Specifications

- **Conversion:** 32-bit A/D, 32-bit D/A
- **Sampling Rate:** 32.0kHz, 44.1kHz, 48kHz, 88.2kHz and 96kHz
- **Maximum Level:** from 307 mVpp to 8.36 Vpp
- **Gain Control Range:** 28.7 dB
- **Noise:** -103dBA, -97dB RMS
- **Distortion (THD):** 0.007%
- **Frequency Response:** 20Hz-20kHz +/- 0.9 dB
- **Maximum Level:** 1.60 Vpp
- **Noise:** -99dBA, -94dB RMS
- **Distortion (THD):** 0.007%
- **Frequency Response:** 20Hz-20kHz +/- 0.1 dB

## Warranty

Please visit:

[www.ikmultimedia.com/warranty](http://www.ikmultimedia.com/warranty)

for the complete warranty policy.

## Support and more info

[www.ikmultimedia.com/support](http://www.ikmultimedia.com/support)

[www.irighd2.com](http://www.irighd2.com)



## FCC statement

This device complies with Part 15.107 and 15.109 Class B of the FCC Rules CFR47: October 2010.

Operation is subject to the following two conditions:

1. This device may not cause harmful interference.
2. This device must accept any interference received, including interference that may cause undesired operation.

Changes or modifications not expressly approved by the party responsible for compliance could void the user's authority to operate the equipment.

iRig® HD 2, AmpliTube®, VocaLive™, SampleTank®, iGrand Piano™ are trademarks or registered trademarks property of IK Multimedia Srl. All other product names and images, trademarks and artists names are the property of their respective owners, which are in no way associated or affiliated with IK Multimedia. iPad, iPhone, iPod touch, Mac, Mac logo and GarageBand are trademarks of Apple Computer, Inc., registered in the U.S. and other countries. Bluetooth is a trademark of Bluetooth SIG, Inc., registered in the U.S. and other countries. App Store is a service mark of Apple Inc.