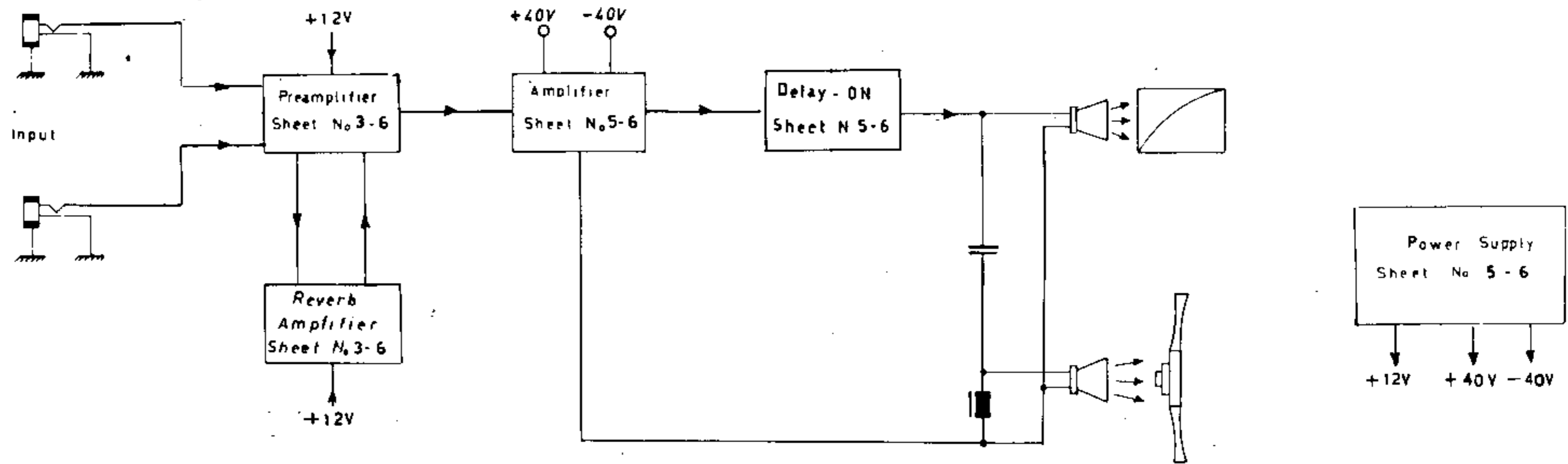


ELKA



ELKATONE

700

schematic diagrams



NOTE


-  Resistors mounted 10 mm above board
-  Non inflammable resistors mounted 10 mm above board

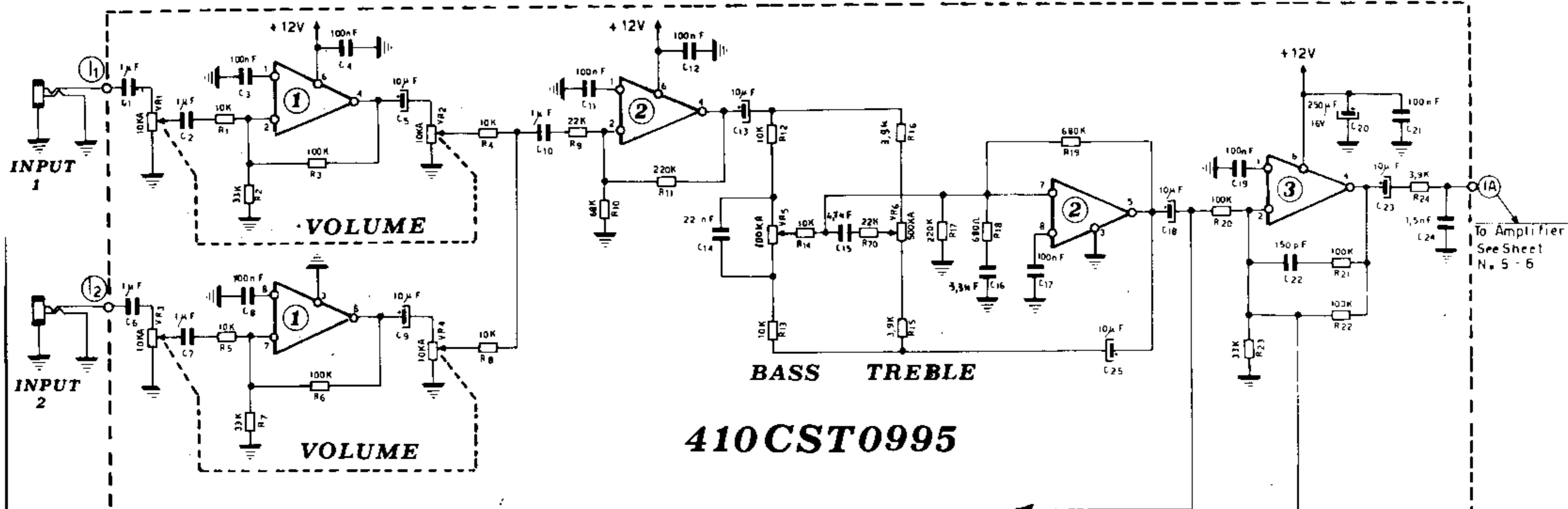
Designed by

Drawn by

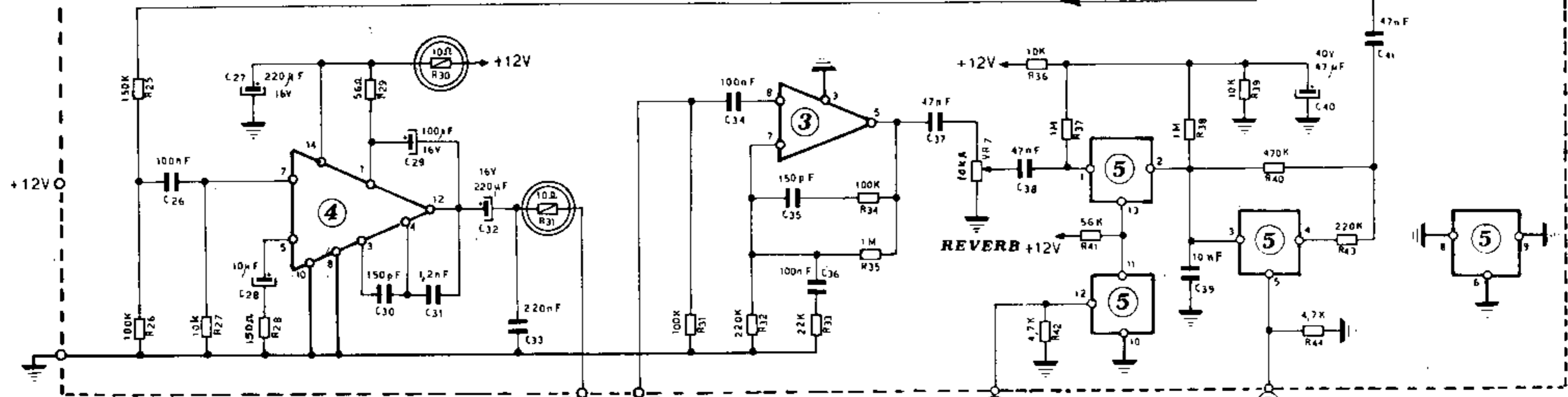
Wm WBS

Checked by

	Model	Object:	Sheet No 1-6
	Elkatone 700	Block diagram	Date 9-2-79



410CST0995



4016 { Pin 7 = GND
Pin 14 = +12V

Integrated circuits		
Code	Type	Manufactured
1-2-3	LM 387	National
4	TAA611A 12	S. G. S.
5	4016	Only S.G.S.

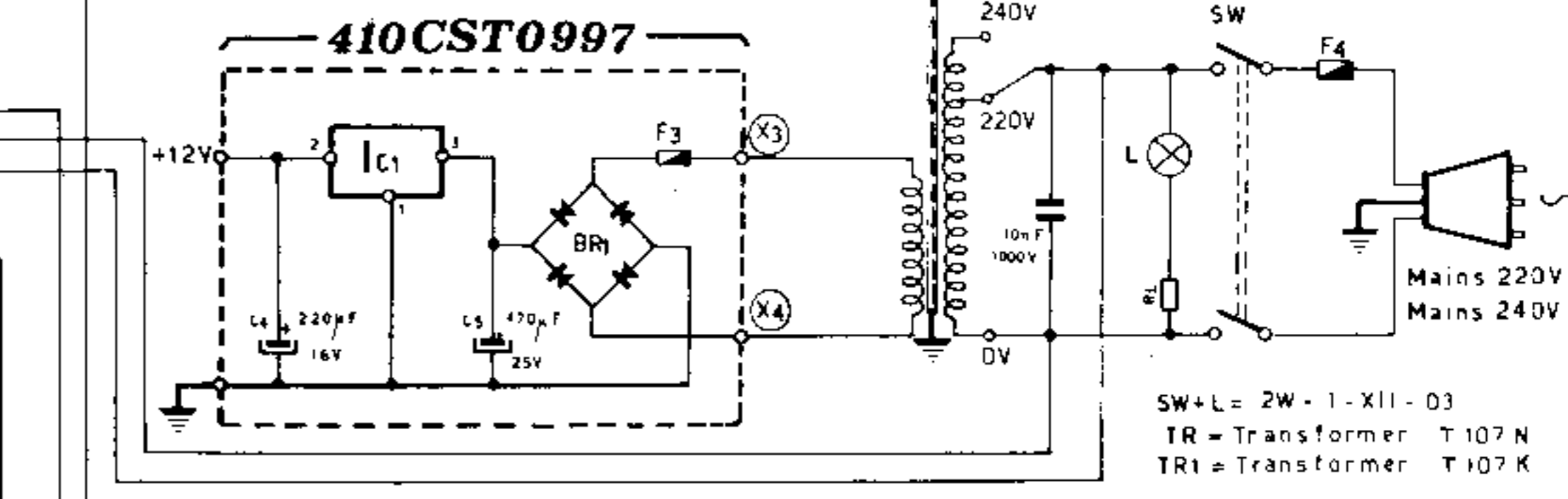
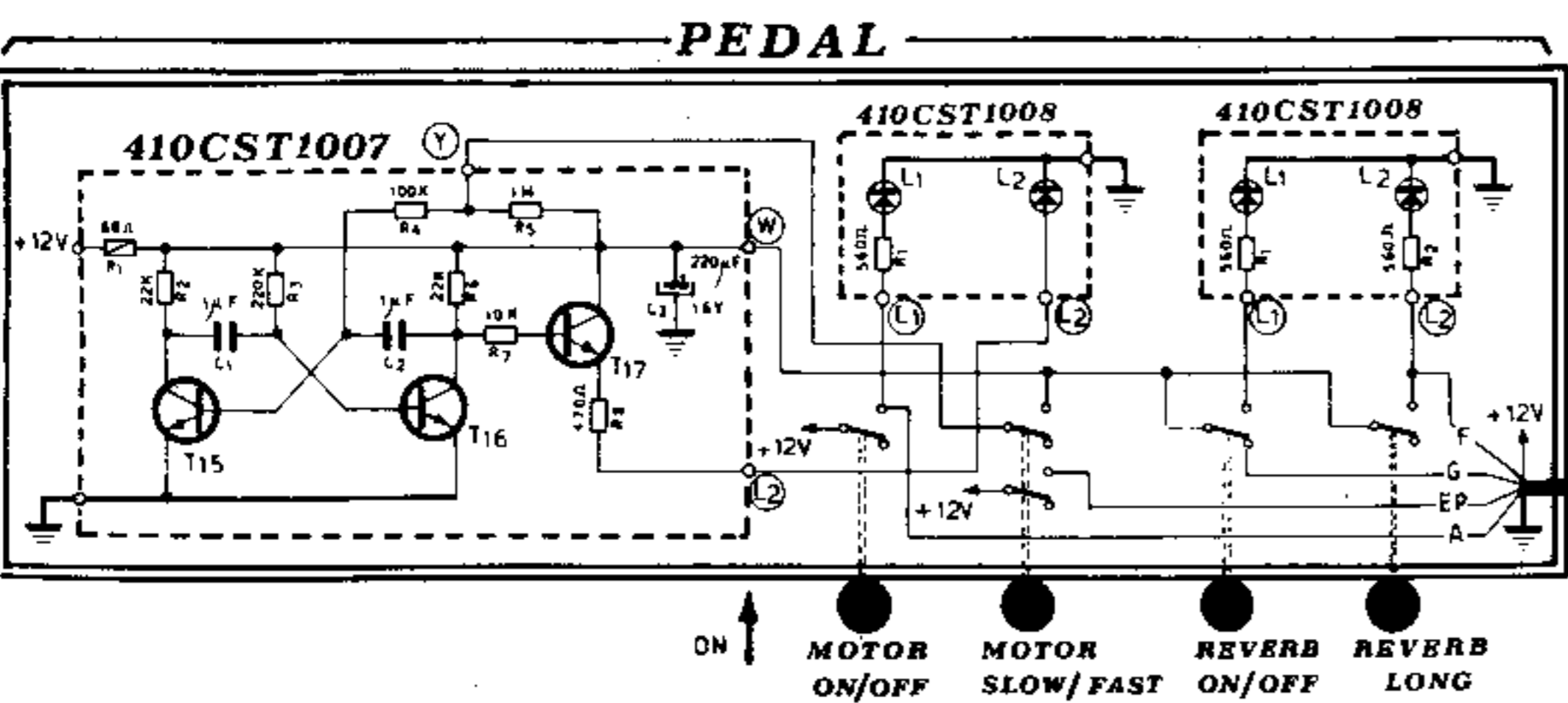
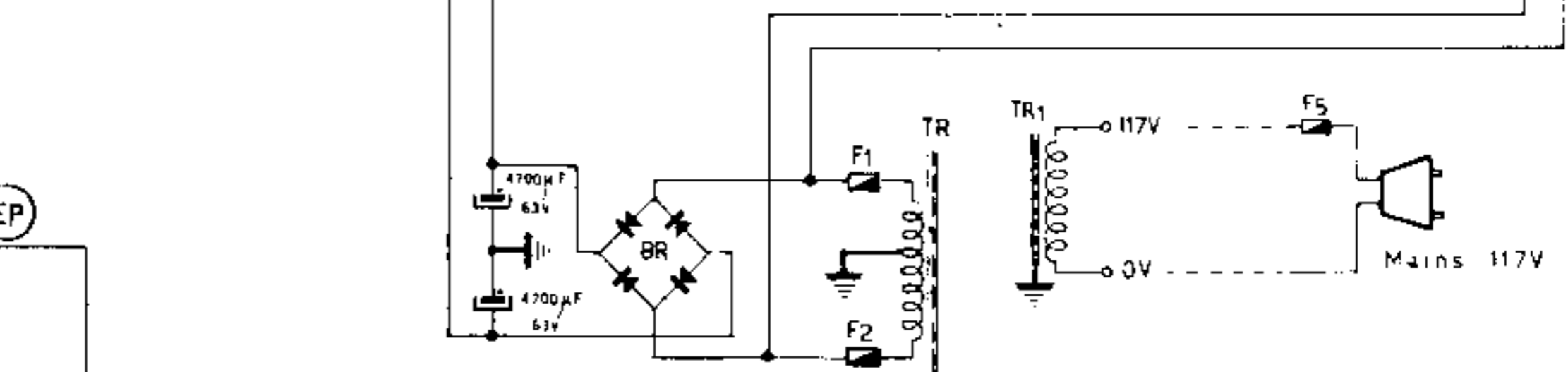
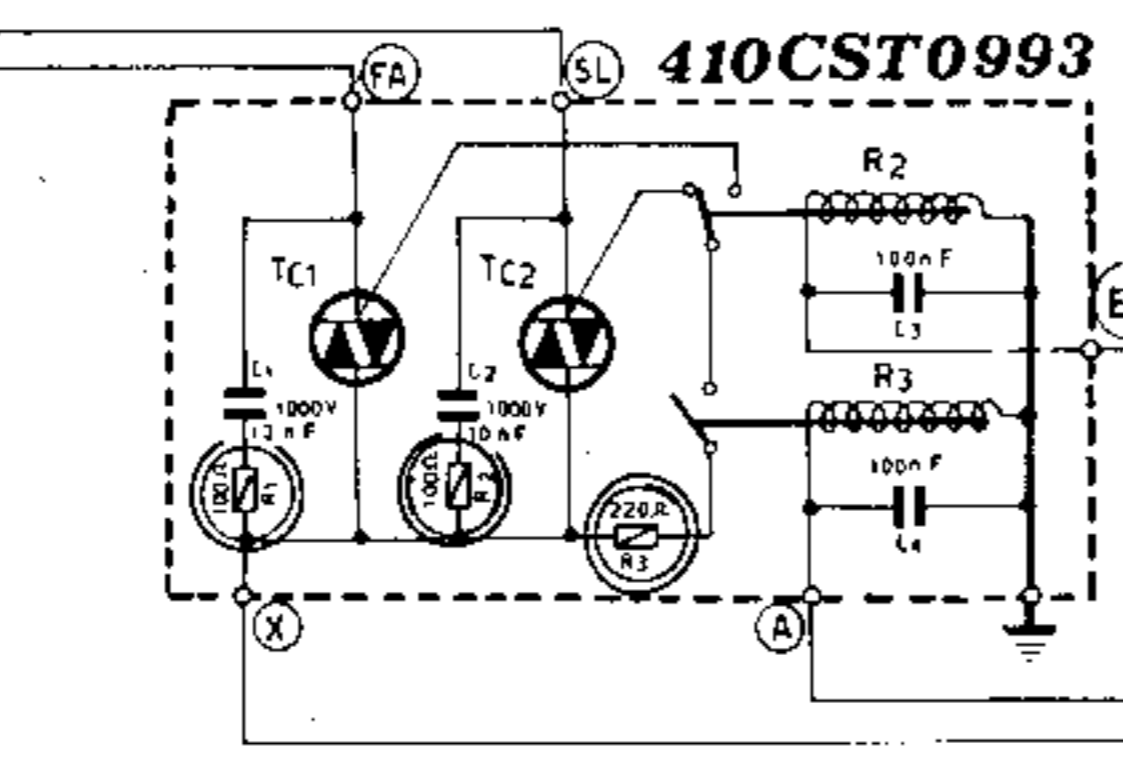
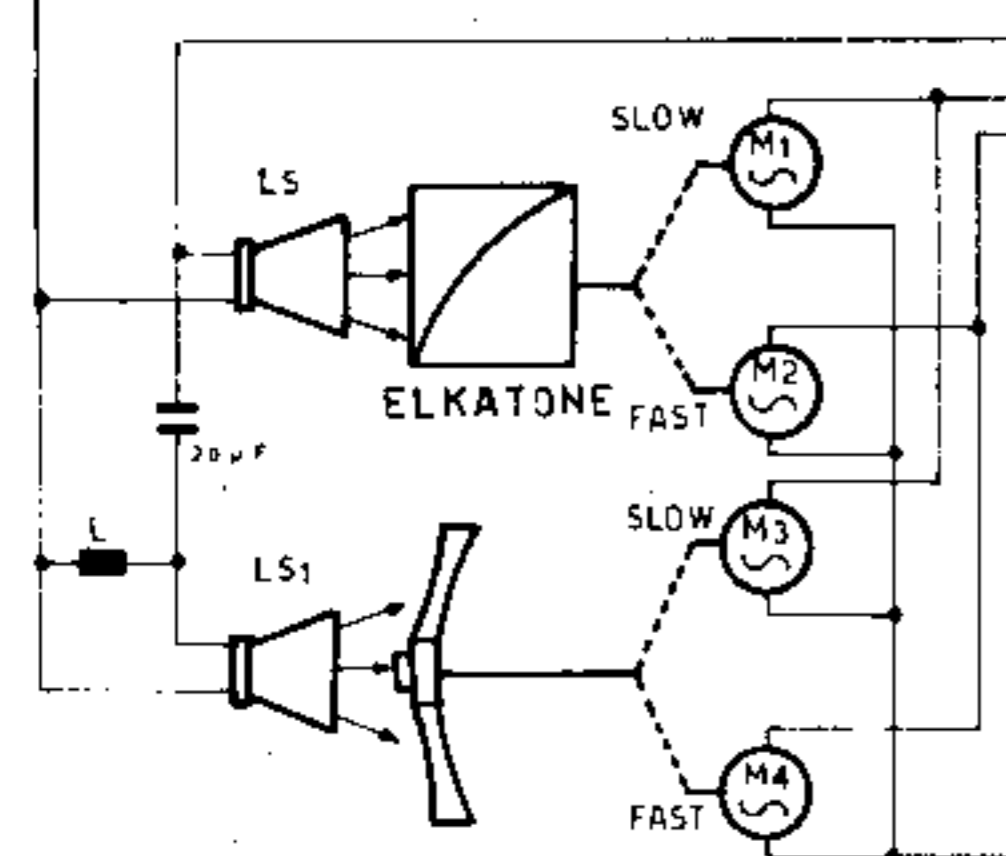
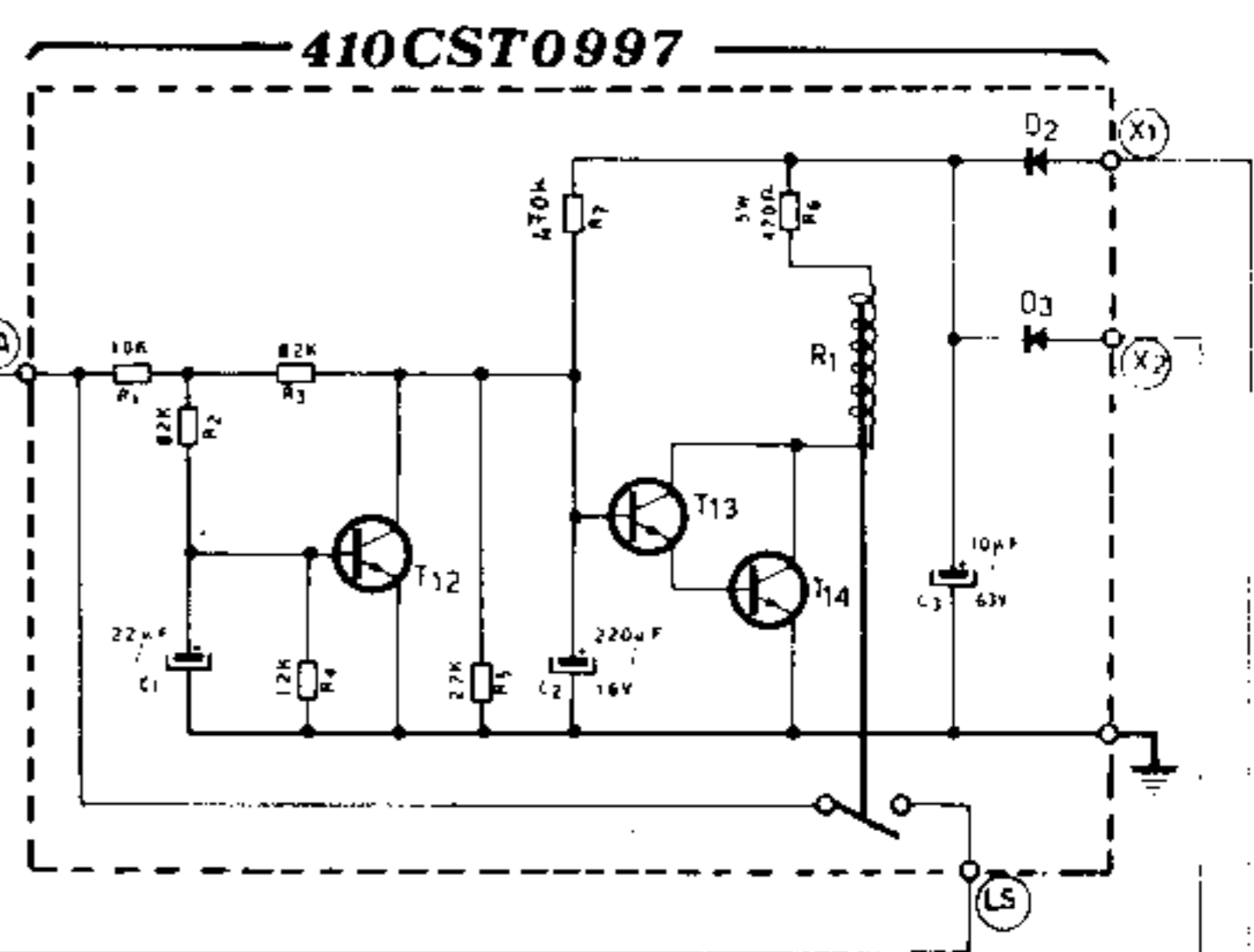
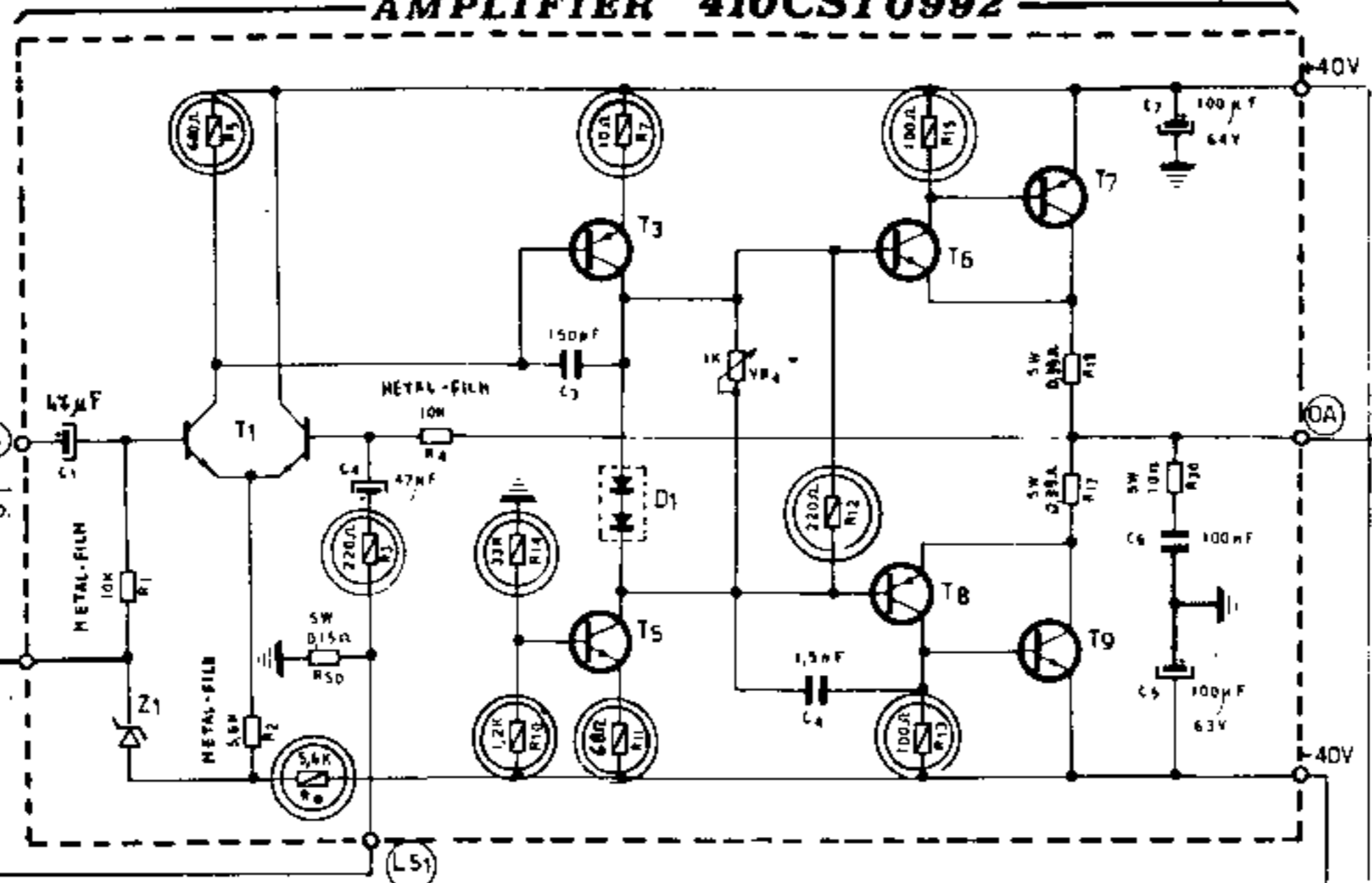


See Sheet N. 5-6 Pedal

See Sheet No. 6-6
AMPLIFIER 410CST0992

Code	Type	Transistors
T1	NPN	MD 8002
T3-T8	PNP	MR5U 56 or BD520 Motorola
T5-T6	NPN	MPSU 06 or BD519 Motorola
T7	PNP	MJ 4502 Motorola
T9	NPN	MJ 802 Motorola
T12-T13	NPN	BC 173 B
T14	NPN	BC 286
T15-T17	NPN	BC 239

TC1 = TC2 = Q 601054 Teccor
 M1-M4 = Motor Acem
 L = 3,22 mH
 LS = L12 P42 4A
 LS1 = 8A
 Z1 = 1N5240
 D1 = M2 2361
 D2=D3 = 1N 4004
 R = R3 = 410 - 12V - 5A - 288Ω - 1005 - 1125
 L1=L2 = FDL 110
 D2=D3 = 10 D2



To Reverb See Sheet No. 3-6

IC1 = UA 7812UC Fairchild
 BR = KB402
 BR1 = W02
 F1=F2 = Fuse 3,15AT
 F3 = Fuse 1,25AT
 F4 = Fuse 3,15AT
 F5 = Fuse 6,3AT

ON ↑
MOTOR ON/OFF
MOTOR SLOW/FAST
REVERB ON/OFF
REVERB LONG

	Model Elkatone 700	Object: Amplifier and Power supply	Sheet No. 5-6 Date 9-2-79
--	--------------------------	--	------------------------------



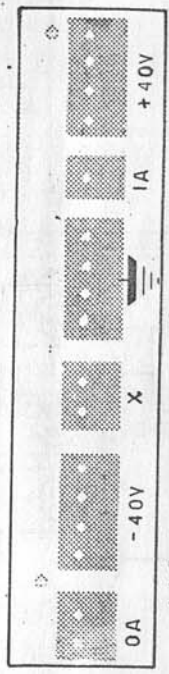
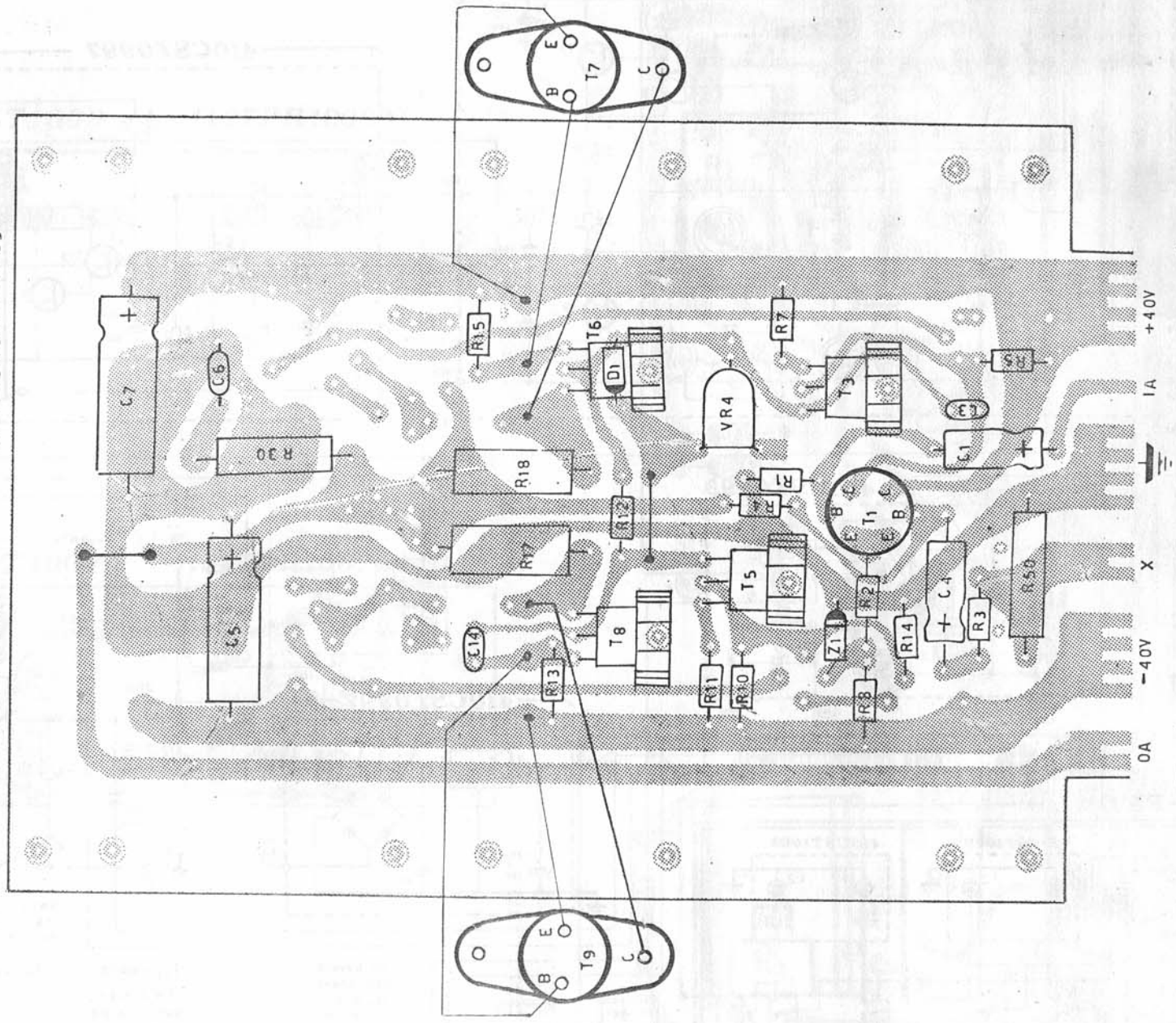
Model
Etkalone
700

Object
Assembly of
Printed Circuit

Sheet No 6-6
Date 21-3-79

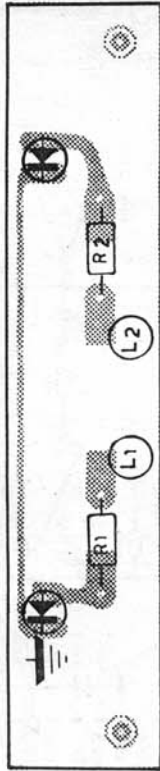
THE NUMBERS IN BRACKETS REPRESENT THE ELKA CODES OF THE ASSEMBLED BOARDS WHILST THE OTHERS REPRESENT THE ELKA CODES OF THE NON ASSEMBLED BOARDS.

410CST0992 (427GR09920)

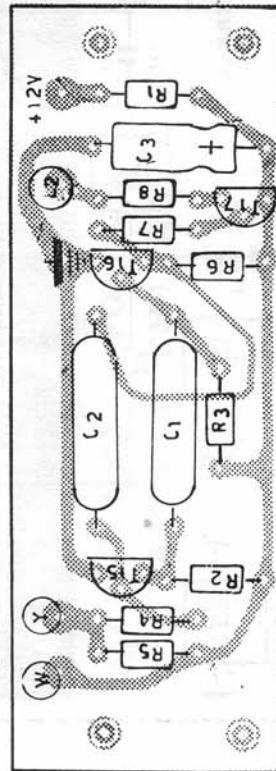


410CST0994 (427GR09940)

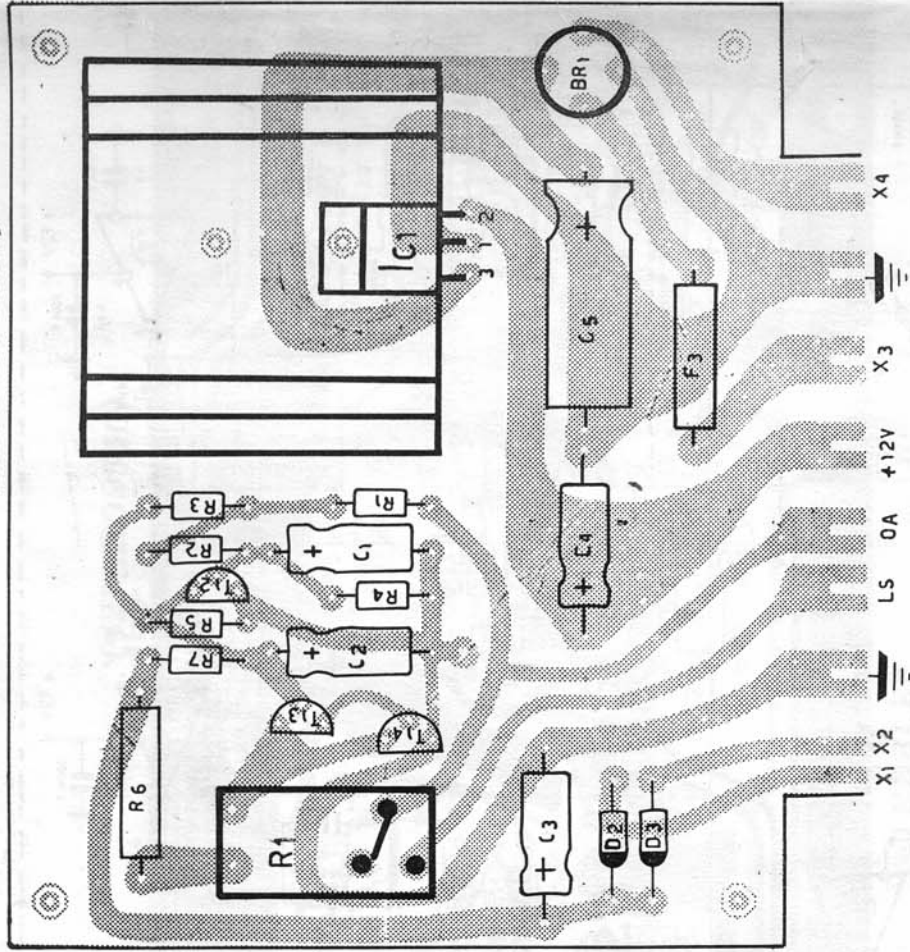
410CST1008 (427PR10080)



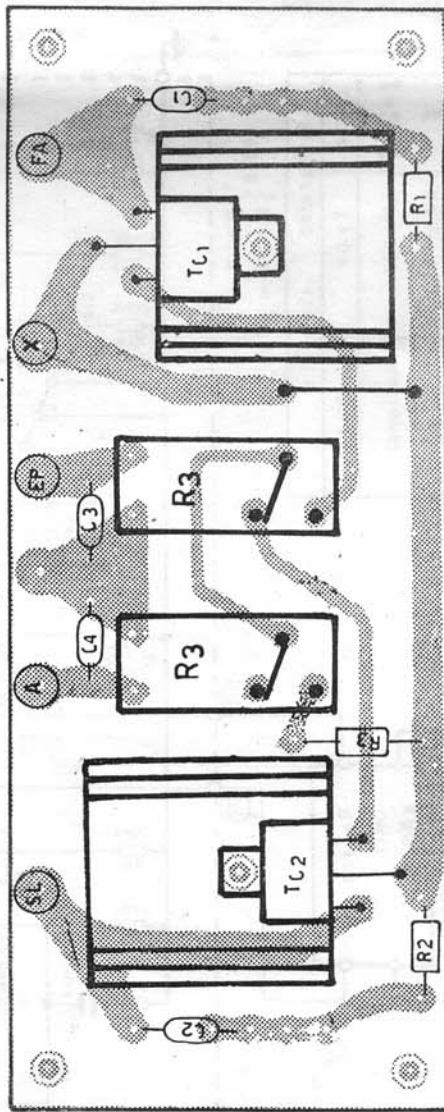
410CST1007 (427PR10070)



410CST0997 (427GR09970)



410CST0993 (427GR09930)

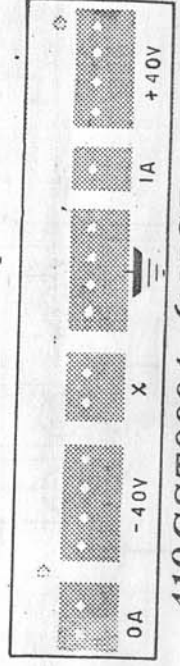
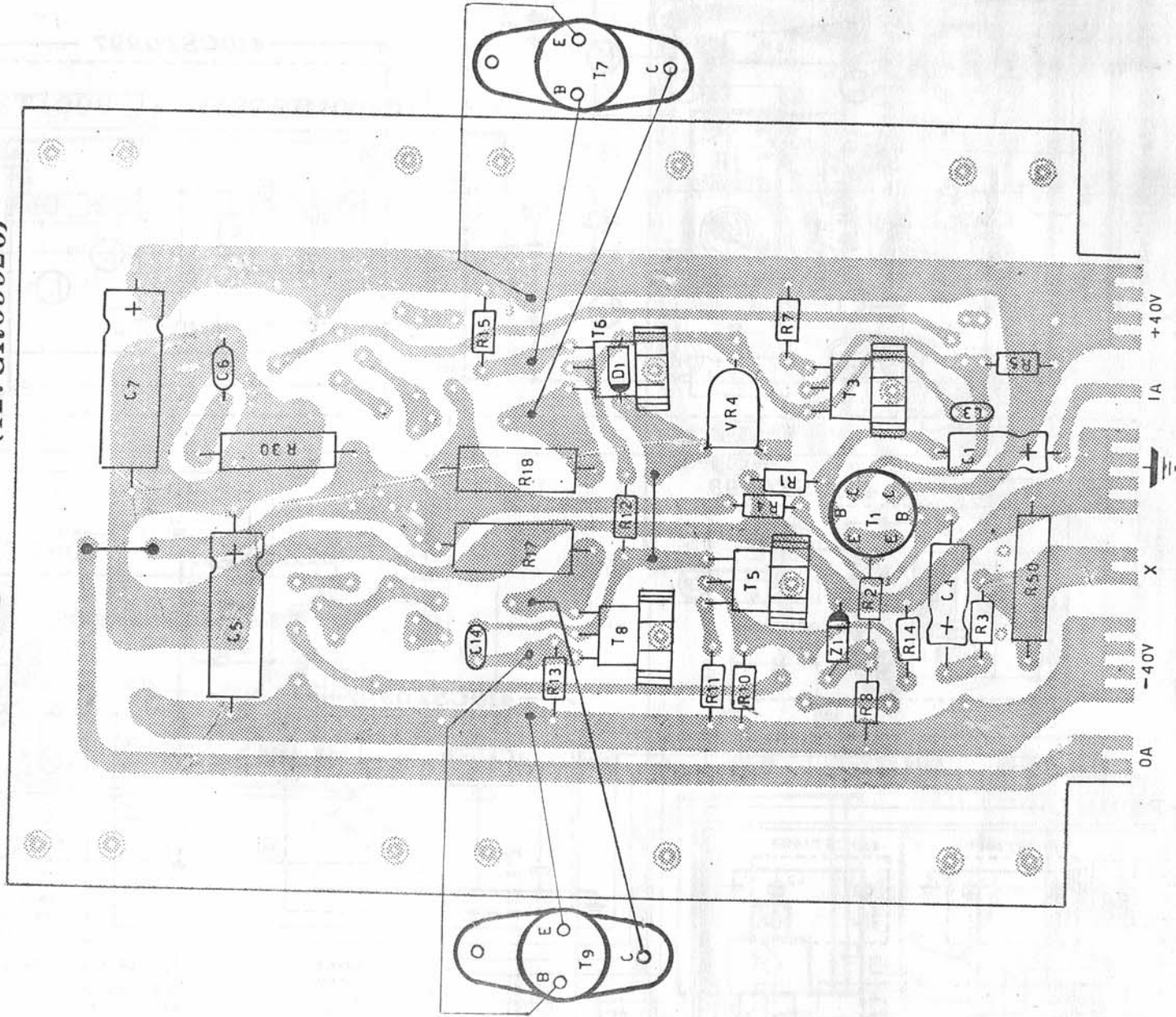


THE NUMBERS IN BRACKETS REPRESENT THE ELKA CODES OF THE ASSEMBLED BOARDS WHILE THE OTHERS REPRESENT THE ELKA CODES OF THE NON ASSEMBLED BOARDS

Mode I ELKATONE 700	Object: Assembly of Printed Circuit	Sheet No 4-6 Date 17-5-79
---------------------------	---	------------------------------

410CST0992

(427GR09920)

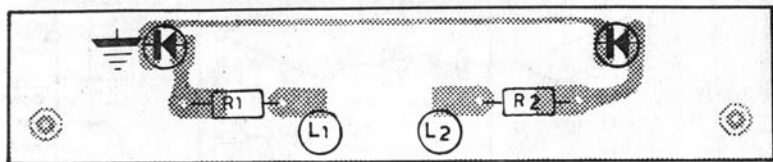


410CST0994 (427GR09940)

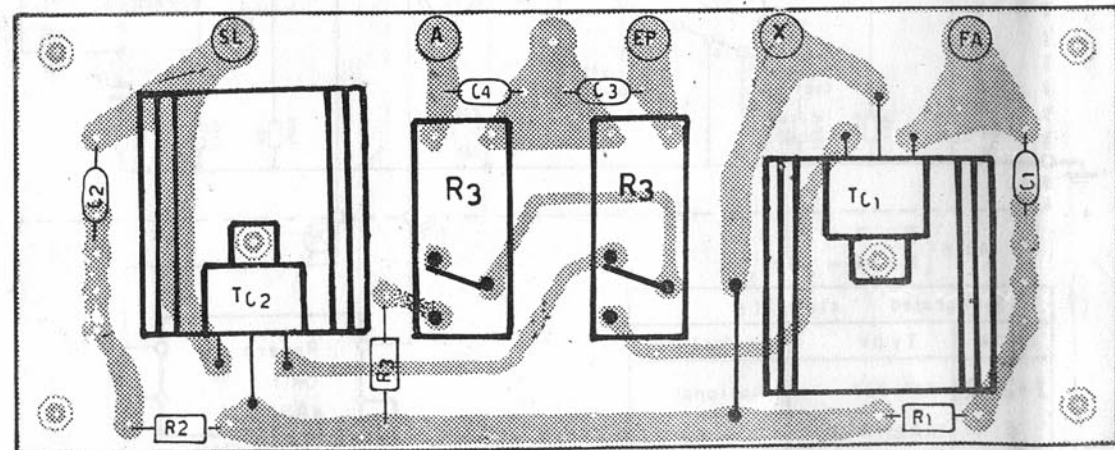
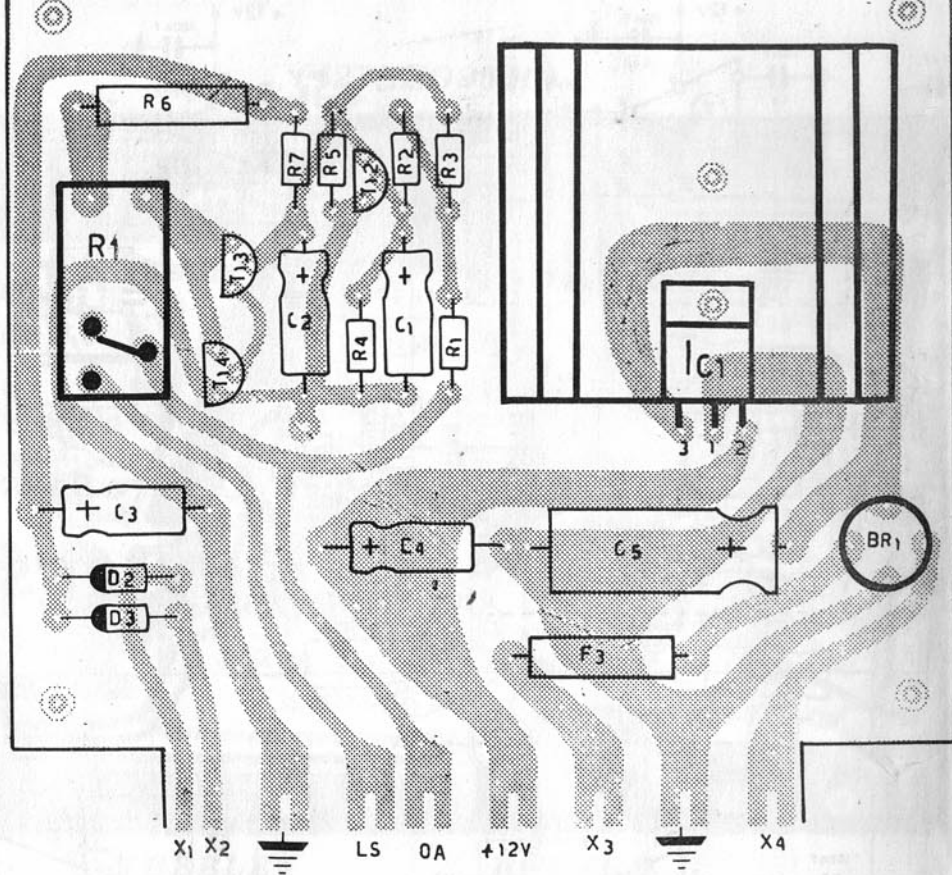
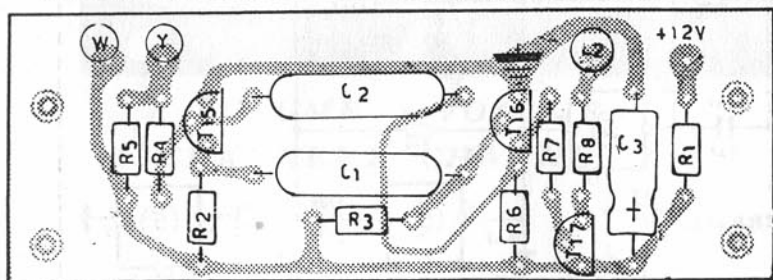
	Model	Object	Sheet No 6-6
	Eikatone	Assembly of	Date 21-3-79
	700	Printed Circuit	

THE NUMBERS IN BRACKETS REPRESENT THE ELKA CODES OF THE ASSEMBLED BOARDS WHILST THE OTHERS REPRESENT THE ELKA CODES OF THE NON ASSEMBLED BOARDS.

410CST1008 (427PR10080)



410CST1007 (427PR10070)



410CST0993

(427GR09930)



Model
ELKATONE
700

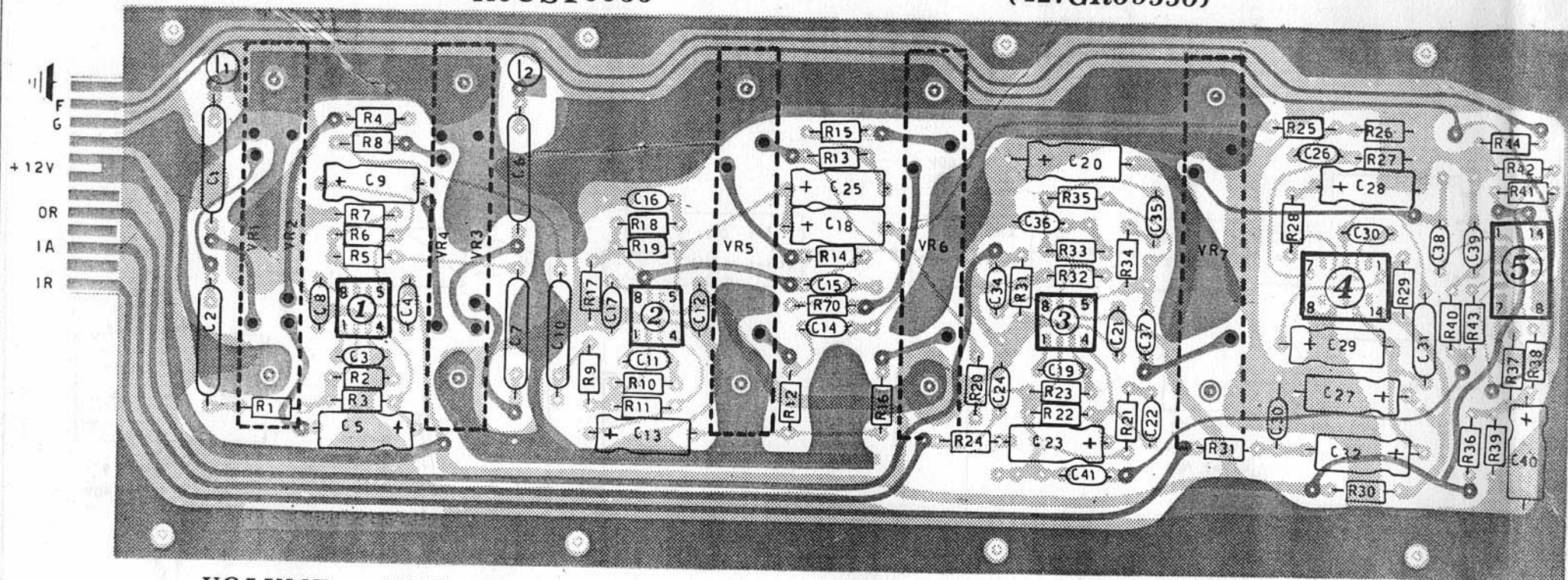
Object:
Assembly of
Printed Circuit

Sheet No 4-6
Date 17-5-79

THE NUMBERS IN BRACKETS REPRESENT THE ELKA CODES OF THE ASSEMBLED BOARDS WHILST THE OTHERS REPRESENT THE ELKA CODES OF THE NON ASSEMBLED BOARDS.

410CST0955


(427GR09550)



VOLUME CHANNEL 1 VOLUME CHANNEL 2

BASS TREBLE

REVERB

	Model	Object	Sheet No. 2-6
	Elkatone 700	Assembly of Printed Circuit	Date 30-4-79

THE NUMBERS IN BRACKETS REPRESENT THE ELKA CODES OF THE ASSEMBLED BOARDS WHILST THE OTHERS REPRESENT THE ELKA CODES OF THE NON ASSEMBLED BOARDS

Manufactured by **ELKA**