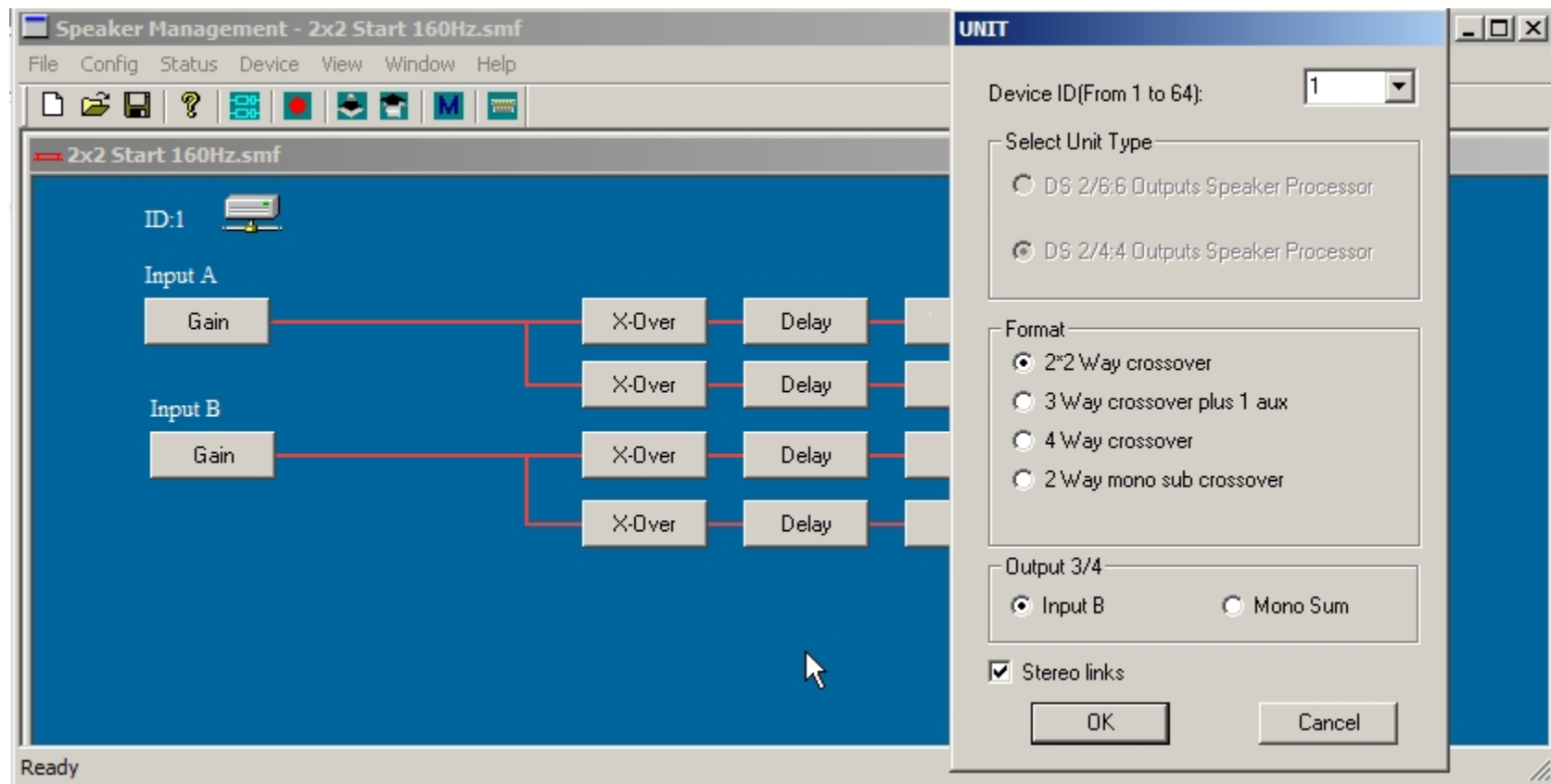


T.Rack DS 2/4

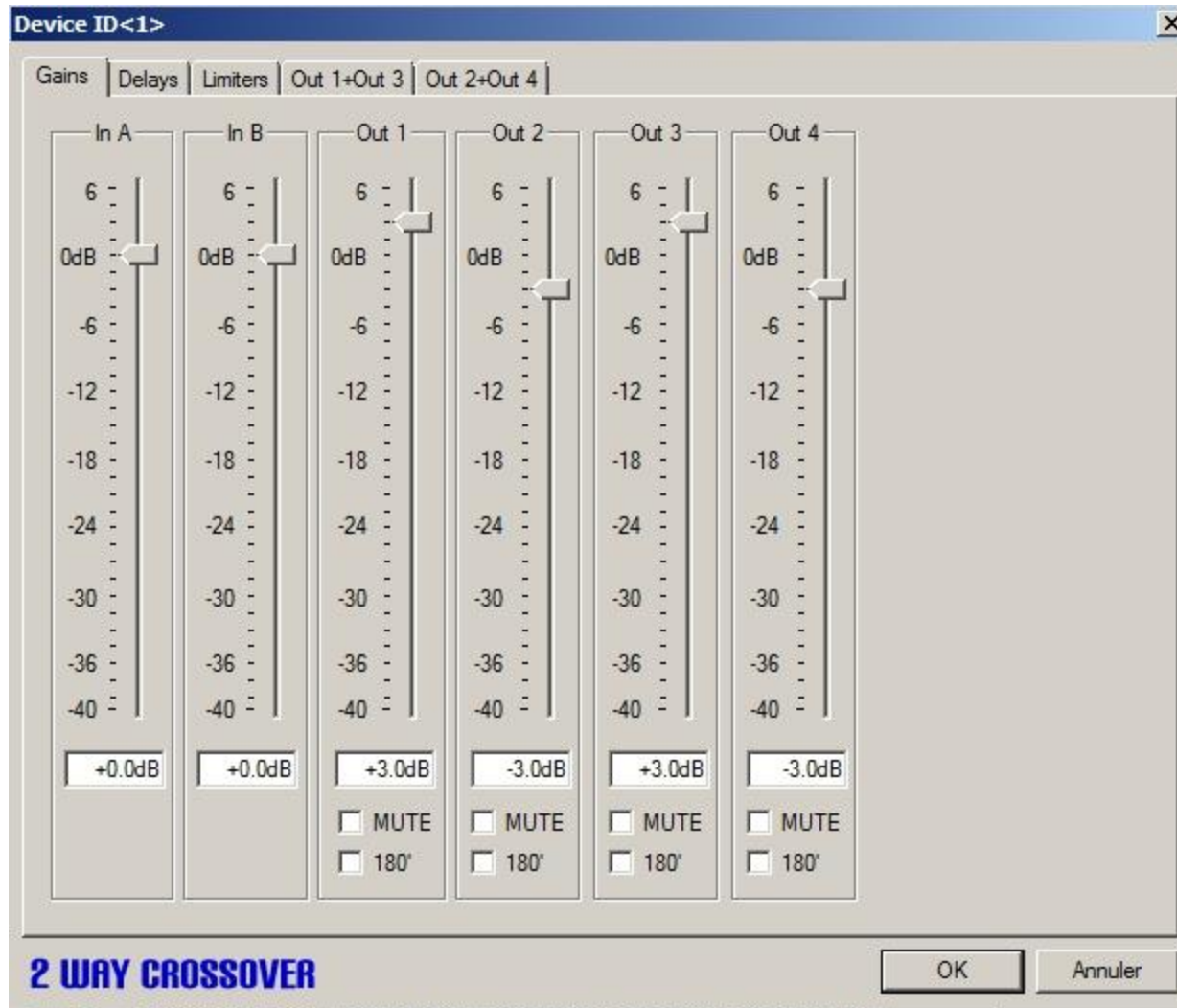
Starting settings

All Purpose

2 Way (2x2)



L/R In 0dB Bass +3dB (Out 1/3) – Top -3dB (Out 2/4)



Bass amplifier need more drive for full power (Voltage Gain)

Device ID<1> [X]

Gains | Delays | Limiters | Out 1+Out 3 | Out 2+Out 4

In A

0.0 mS

Out 1

0.0 mS

Out 2

In B

0.0 mS

Out 3

0.0 mS

Out 4

Units

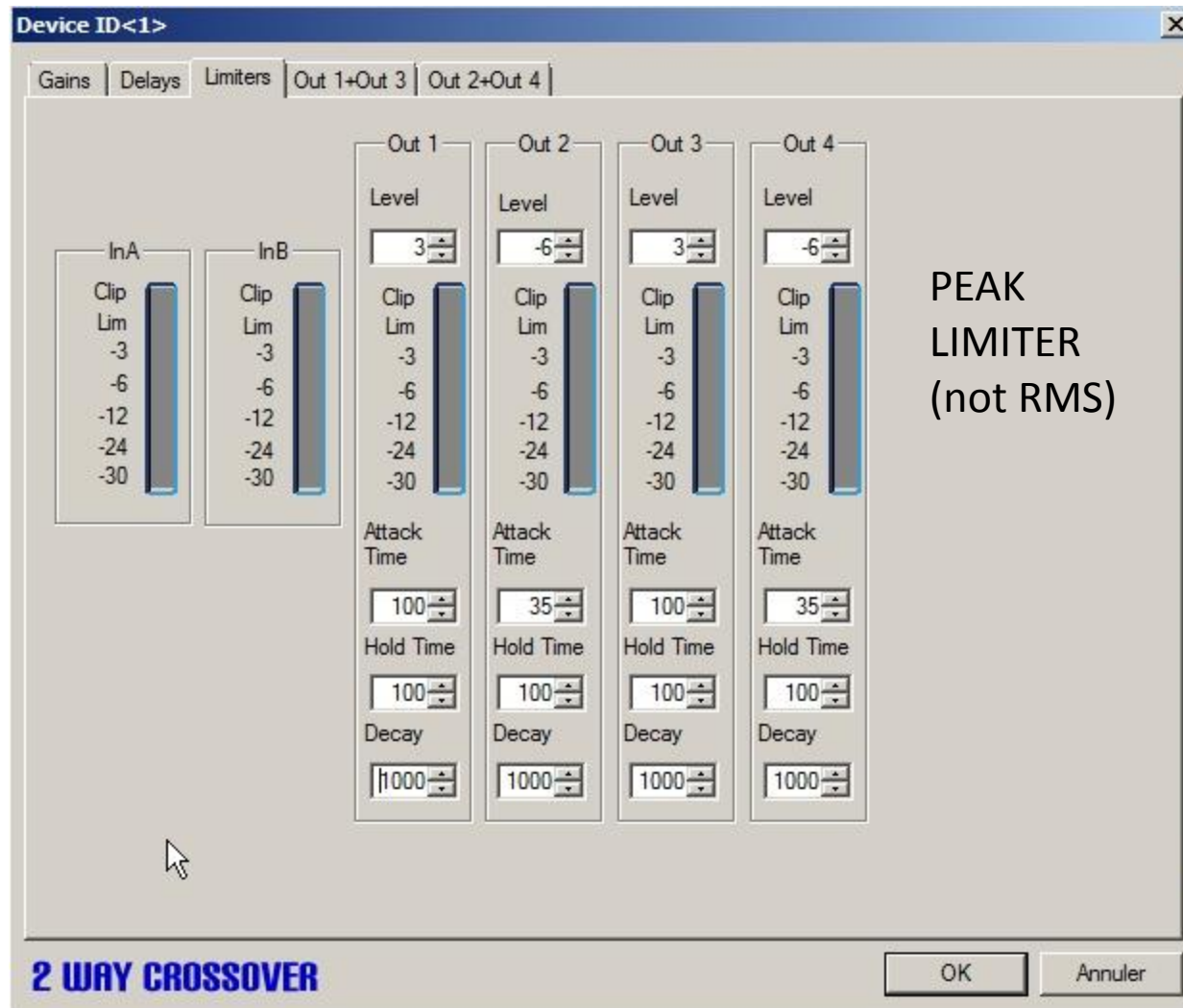
- ☒ Millisecond
- ☐ Metres
- ☐ Feet

2 WAY CROSSOVER

OK Annuler

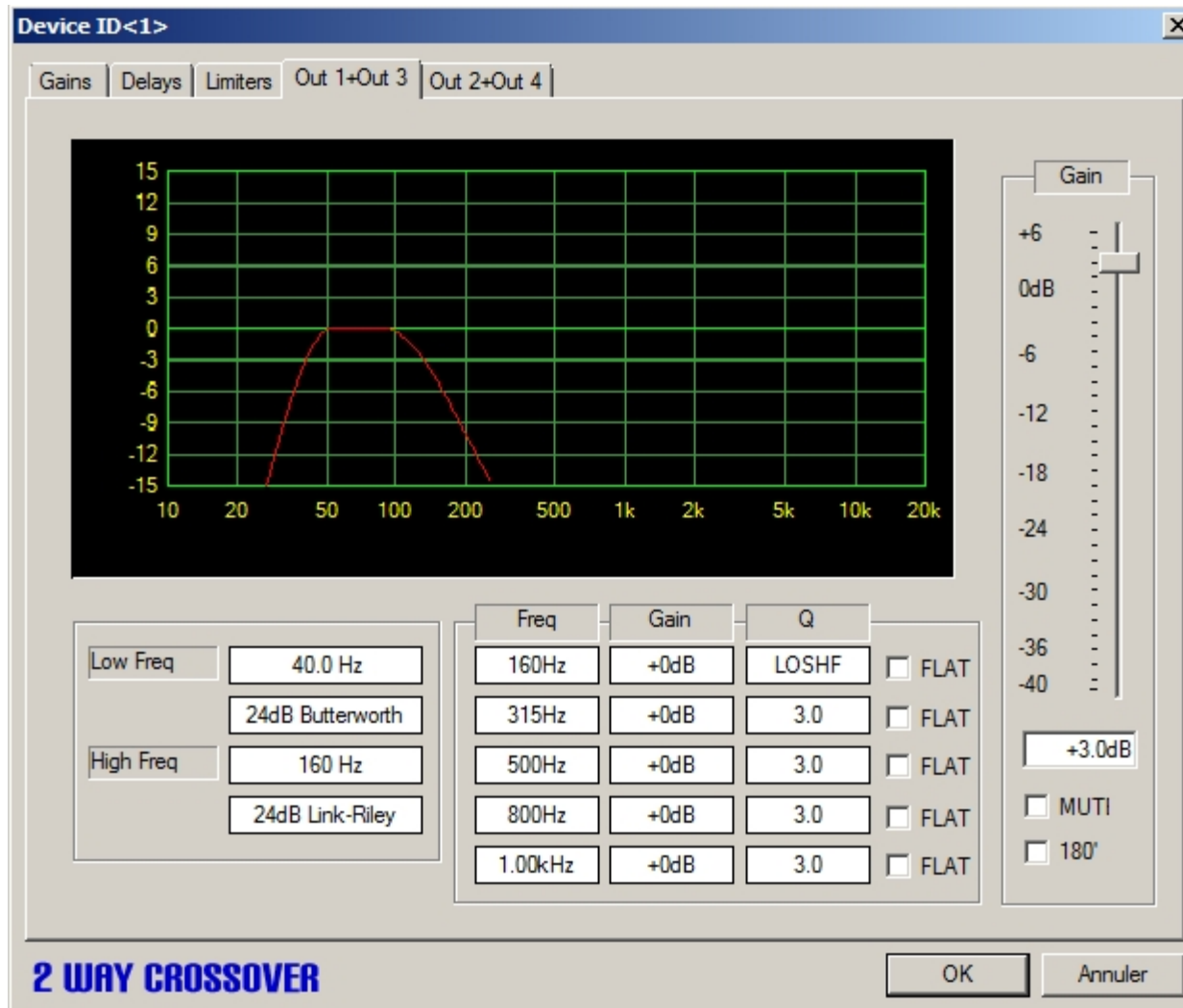
LIMITER

Bass +3dB (Out 1/3) – Top -3dB (Out 2/4)



Using RMS compressor is much better (like DEQ2496 before DS24)

BASS X-over (40Hz protection / 160Hz LR24 cross-over)



TOP X-over (15KHz protection / 160Hz LR24 cross-over)

