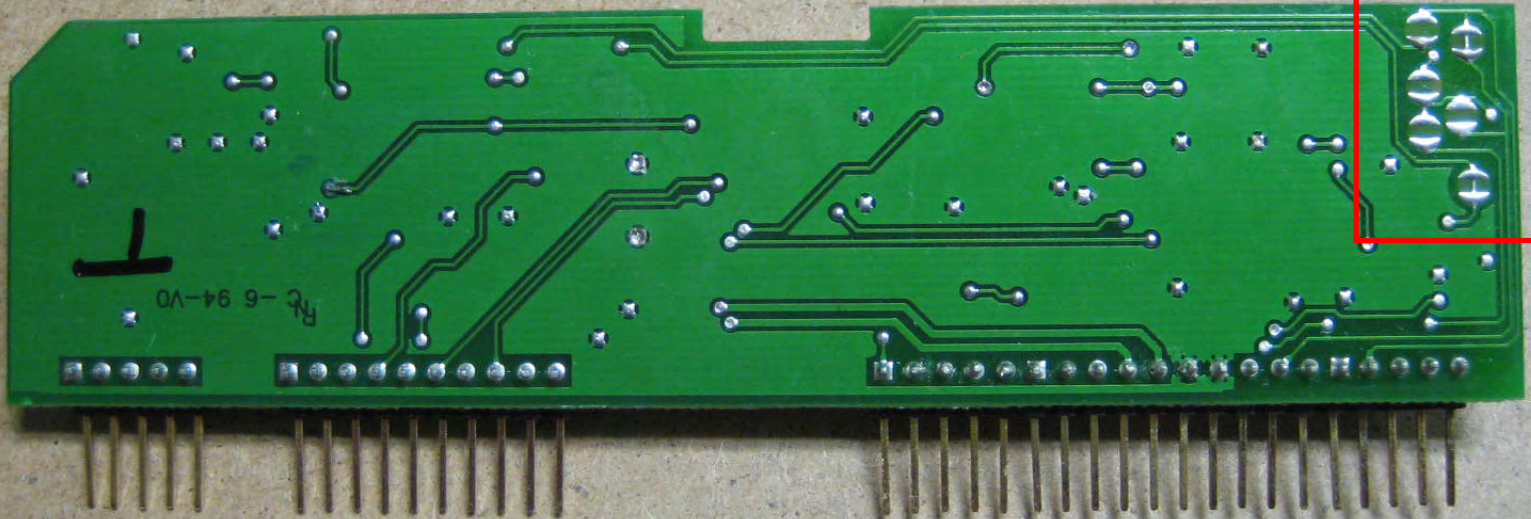


**ProRack and ProDesk  
Mono Channel  
PreAmp / EQ Card  
(Solder-side View)**

Aux and Dir Out  
Options



**The cards plug into the rear of the Main PCB and  
connect via these gold-plated pins**

**Aux Pre-EQ Source Options:**  
Pre-Insert (Post-HPF)      \*Post-Insert

**Direct Out Options:**  
Pre-Fader  
Post-Insert  
Post-Fader  
\*PreAmp-Out

Copper trace  
(Default Connection)

When changing an option, be sure to cut completely thru the thin trace linking the default option.

Then solder-bridge across the 2 half-circles of the desired option to complete the new circuit path.

You can use a short length of bus wire to help with the bridge connection

\* indicates the factory default